



# Hybrid Ready Future Ready

# The ways people work will keep evolving



## My office is wherever I am

Companies no longer expect all employees back in office | Employees prefer mix of remote + office days

## I am present remotely + in person

The new normal is hybrid meetings | My presence means my face + communication/IM/chat

## I blend the physical + digital

Video replacing static images | Multi-camera use can show my face + other content (such as demos)

## Market environment

Businesses face 4 major computing challenges

### Remote/Hybrid Work

- Minimise touch
- Reduce incidents
- Resolve issues fast
- Deploy easily

### Cybersecurity

- Zero-trust model
- Defend against modern threats
- Reduce risk

### User Experience

- Drive personal productivity
- Better collaboration
- Smarter connectivity
- Adapt to needs in real-time

### Sustainability

- Re-use/sanitise devices
- Energy efficiency
- Cost-efficient upgrades

## Key Insights/Trends

### Employees want flexibility

77% prefer hybrid working (home + office + anywhere)

### Hybrid workers still face challenges

Only 22% say they are thriving

### ITDMs struggling to manage/support

62% find job harder (distributed workforce, macro climate)

### Businesses want companies they trust

52% will pay more for a brand image that appeals

## Summary

Get the most out of PCs to get the most for business. HP can deliver balanced solutions that address hybrid work, cybersecurity, user experience and sustainability.

# What does a successful hybrid experience look like?



## At home

Being seen/heard just like in person, with a set-up optimised for productivity



## On the go

Frictionless transitions, privacy and minimum noise



## Around the office

Enable collaboration + focused work so can be as productive as at home

## Only HP can meet the challenges

HP vision and value proposition

### For End Users

Give employees/teams the right tools to be productive, collaborative and connected from anywhere

- Collaboration from home to rooms
- Remote computing (cloud/WFH)
- Smart Digital workflows

### For IT

Give ITDMs a unified IT journey from purchase to end-of-life enhanced by SW/predictive analytics

- Proactive fleet manageability/security
- Workforce lifecycle services
- Employee experience measurement

### With TCO Sustainability

- Automation to boost physical processes + proactive services
- Circularity/Responsible tech
- Managed services to drive capex to opex, convenience, reduce TCO

## HP solutions and services

Compute / Peripherals / Room Solutions / Print / Services

### Enhanced collaboration with HP Presence

I can share my work + show my face

### Seamless Transitions

I can move freely and securely as my PC adapts to how/when/where I work

### Power and Performance

My PC intelligently balances my productivity needs

## Summary

To be seen and heard at your best wherever you're working, the right tools are essential.

**To learn more about how HP supports the next level of hybrid experiences, contact your HP Partner Business Manager.**

# Intel technology offers the best connectivity experience with HP



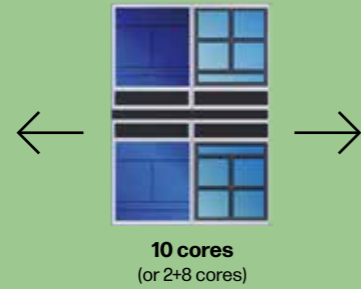
## NEW 13<sup>th</sup> Gen Intel Core Processors

Latest hybrid architecture for productivity + performance in today's business computing environments

### New faster cores

Performance Cores (P-cores) support compute-heavy tasks

- Improved clocking
- Better application performance

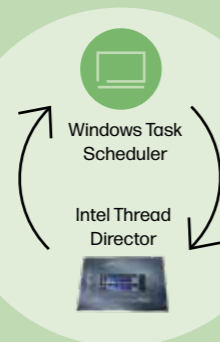


Efficient Cores (E-cores) are optimised for background tasks

- Higher compute capacity
- Different clocking
- More E-cores on desktop

### Windows Task Scheduler + Intel Thread Director

CPU and OS coordinate to move tasks between P-cores and E-cores for best results.



Intel's hybrid architecture is already supported in Windows 10 and 11.

### New platform technologies

- Enabling design innovation with best-in-class memory, I/O & connectivity
- New visual sensing and AI experiences
- Leadership Overclocking tools

Tackle big projects using multiple applications with:

- NEW thermal innovation and power suite which give high performance + long battery life without extra weight or thickness
- 13<sup>th</sup> Generation Intel® Core™ processor up to Core™ i7 with optional vPro®
- Responsive, hybrid-ready performance with up to 32GB of LPDDR5 memory and up to 2TB of storage

### Summary

HP devices built on Intel 13<sup>th</sup> generation CPU's offer advanced performance, faster cores and new technologies

# 13<sup>th</sup> Gen Intel® Core™ Processors



## Which processor suits which employee?

A choice of processors to suit increasingly complex workloads

### U-series

Thin-and-light notebooks



For Most Workers

- Creates and consumes content/ collaborates remotely/on-site
- Lightly threaded applications

### P-series

Performance notebooks

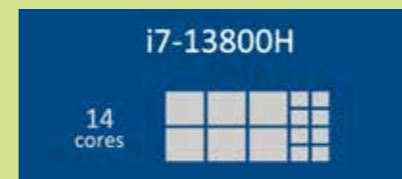


For Specialised Workers

- Creates, consumes + analyses data in frequent remote digital collaboration
- Multi-threaded applications

### H-series

Mobile workstations

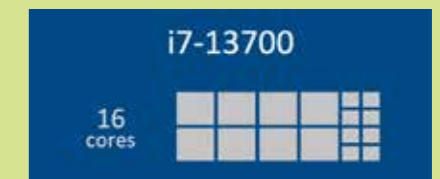


For Developer/Creators

- Performs engineering or operational visual computing tasks from various locations
- Demanding, highly threaded applications

### S-series

Business desktops



For Power Workers

- Starts at 65W
- Can scale up to 24 cores: 8 x P-cores + 16 x E-cores

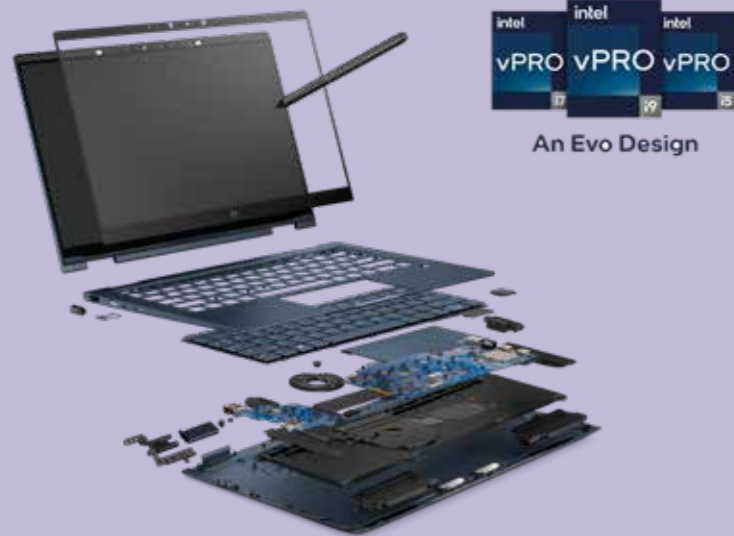
### Summary

With so many choices available, HP makes it easy to select the right device and processor for each organisation and employee.

**For more information, contact your HP Partner Business Manager.**

# Platforms matter

## HP + Intel bring it all together



### For Performance

- Intel vPro® – an Evo design
- 12<sup>th</sup> or 13<sup>th</sup> Gen core processor
- Best-in-class connectivity, wired or wireless options
- AI Optimised
- Thunderbolt 4
- Range of prices, styles, and accessories

### For Workplace Security



## Summary

Give users the experiences they demand with the business features that Business and IT require.

# Intel vPro® Platform

## Built for business PCs



### Performance

#### 13<sup>th</sup> Gen Intel® Core™ processors

Increase productivity and improve the employee experience wherever work happens.



### Security

#### Intel® Hardware Shield

Intel vPro® provides the most comprehensive security for your business. Help protect your organization using multilayer, hardware-based security.



### Manageability

#### Intel® Active Management Technology

Cost-effective device management from initial provisioning to retirement, wherever devices are.



### Stability

#### Intel® Stable IT Platform Program

Full platform integration and validation.

## Summary

A successful business PC needs far more than a high-performance CPU so Intel vPro® provides the full hardware foundation.

**For more information, contact your HP Partner Business Manager.**

# HP Commercial Notebook Portfolio



## ProBook



### 200 Series

Compact, reliable, value-packed notebooks with essential business features to help you excel in hybrid work



### 400 Series

Affordable devices designed with business in mind, offering commercial grade features and durable design

## EliteBook



### 600 Series

Devices that maximise business value to enterprise employees across all hybrid workstyles

Available as vPro Enterprise or vPro Essentials



### 800 Series

- Gold standard for enterprise, setting the bar for performance, connectivity and collaboration
- Available as vPro Enterprise
- Selected models available as Intel vPro an Evo Design

Available as vPro Enterprise only



### 1000 Series

- Ultra-lightweight devices giving freedom to work and truly collaborate from anywhere
- Available as vPro Enterprise
- Selected models available as Intel vPro an Evo Design

## Dragonfly

### Dragonfly G4 | Dragonfly Folio G3

- Best collaboration and productivity experiences in a lightweight, beautifully designed secure device
- HP G3 - Intel® Core™ 12th gen | HP G4 - Intel® Core™ 13th gen

Available as vPro Enterprise

Selected models available as Intel vPro an Evo Design



# HP Dragonfly series



## NEW HP Dragonfly G4: Our ultimate PC for hybrid workstyles



- World's first business notebook to support simultaneous use of two cameras
- World's most advanced presence detection in a business notebook
- Designed for highly mobile tech-forward leaders who want best of the best

## HP Dragonfly Series Evolution



### G4

- Webcam wider field of view to 88°
- Multi-Camera stream

- Smart Sense
- OLED Power Saving

- Intel® 13<sup>th</sup> Gen Core Processor

### What's new?

- Enhanced collaboration experiences

- Greater intelligent experiences

- Next generation performance

## HP Dragonfly G4

**Weight:** 2.2 lbs / 0.999kg

**Dimensions:** 297.4mm x 220.4mm x 16.4mm / 11.7 x 8.67 x 0.65 in

**Impressive performance**  
13<sup>th</sup> generation Intel® Core™ processor

**See more, do more**  
with a 13.5" diagonal OLED display with Adaptive Colour and HP Eye Ease

**Adapts to the way you work**  
with HP Context Aware, HP Auto Lock and Awake and System Control

**Rich audio experience**  
with dual top-edge mics, quad speakers, Dynamic Voice Levelling and AI Noise Cancellation

**Physical battery protection**  
HP Battery Shield 2.0 helps protect your battery from external damage and swelling

**Look your best on video calls**  
with a 5MP camera with 88° FoV, AI Auto Frame, Background Adjustment, Appearance Filter, Natural Tone and low light & backlight adjustment

**Protect your data from prying eyes**  
with HP Sure View Reflect (optional)

**Made with 90% recycled magnesium covers**  
ocean-bound plastics and sustainably sourced packaging

**Crafted with precision**  
from premium materials with diamond cut accents and a lift-anywhere edge. Your choice of Slate Blue or Natural Silver.



## Summary

The HP Dragonfly brings the next level of true mobile experiences that hybrid workers need in 2023.

**For more information, contact your HP Partner Business Manager.**

# HP EliteBook 1000 series



New HP EliteBook 1040 G10 | HP Elite x360 1040 G10: Exceptional mobility and performance



- World's most advanced business notebook for collaboration
- World's first business notebook to support simultaneous use of two cameras.
- For corporate executives who demand high performance, connectivity and security

HP EliteBook 1000 Series Evolution



#### G10

- LPDDR5 memory (X360 1040)
- Optional Intel® 13<sup>th</sup> Gen Core P Series processor

#### What's new?

- More powerful performance
- Enhanced collaboration experiences
- Productivity upgrades
- Connectivity
- Webcam wider field of view to 88°
- Multi-Camera stream
- Intelligent Hibernate Smart Sense
- Intelligent experiences

HP EliteBook 1040 G10 / HP EliteBook x360 1040 G10

**Weight:** 2.6 lbs / 1.189kg / 2.94 lbs / 1.333 kg

**Dimensions:** 315mm x 224.35mm x 17.95mm / 12.40 x 8.83 x 0.70 in / 315mm x 225.8mm x 17.92mm / 12.40 x 8.88 x 0.70 in

**Impressive performance**  
13<sup>th</sup> generation Intel® Core™ U or P Series processor / U series processor

**See more, do more**  
with a 14" diagonal display with HP Adaptive Colour and HP Eye Ease

**360° of flexibility**  
Work in clamshell mode, take notes in tablet mode, watch movies in tent mode

**Manage battery performance**  
and customise charging options with the easy-to-use HP Power Manager dashboard

**Enjoy a cool and quiet PC with longer battery life**  
or turn on maximum performance when you need it most with Smart Sense and System Control

**Look your best on video calls**  
with an 5MP camera with 88° FoV, dual camera support, AI Auto Frame, Background Adjustment, Appearance Filter and low light & backlight adjustment

**Protect your data from prying eyes**  
with HP Sure View Reflect (optional)

**Enclosure made from 90% recycled magnesium**  
bezel and keycaps use recycled plastic and the packaging is 100% sustainably sourced

**Protected by HP Wolf Security**  
From the BIOS to the browser - above, in and below the OS - these constantly evolving solutions help protect your PC from modern threats

## Summary

The HP EliteBook 1000 SERIES brings the next-level video, audio, power and security experiences that hybrid workers need in 2023.

**For more information, contact your HP Partner Business Manager.**

# HP EliteBook 800 series



New HP EliteBook 840 G10 | HP Elite x360 840 G10



- The gold standard corporate notebook, designed for evolving business environments

HP EliteBook 800 Series Evolution



#### G10

- Webcam wider field of view to 88°
- Multi-Camera stream

#### What's new?

- Enhanced collaboration experiences
- Productivity upgrades
- Connectivity
- LPDDR5 up to 32GB (13")
- QHD+ OLED panels (14" & 16")
- 5G connectivity

HP EliteBook 840 G10 / HP EliteBook x360 840 G10

**Weight:** 3.01 lbs / 1.366 kg / 2.87 lbs / 1.30 kg

**Dimensions:** 315.6 x 224.35 x 19.2mm / 12.4 x 8.83 x 0.75 in / 300.1 x 216.02 x 19.2mm / 11.81 x 8.47 x 0.76 in

**Pillow bezels**  
Comfortable and durable lift-anywhere edges

**Rich audio experience**  
with Dynamic Voice Levelling, AI Noise Cancellation19 and audio by Bang and Olufsen

**Help protect our shared future**  
At least 30% post-consumer recycled plastic in the bezel, at least 50% post-consumer recycled plastic in the keycaps

**Dual user-facing mics**  
with 360° voice tracking and Intelligent voice levelling

**Optimise your battery**  
Customise charging options with the HP Power Manager dashboard

**Large clickpad**  
with HP Sure View Reflect (optional)

**Look your best on video calls**  
with an 5MP camera with 88° FoV, dual camera support, AI Auto Frame, Background Adjustment, Appearance Filter and low light & backlight adjustment

**Intuitive navigation**  
with a touch screen and precise inking with the HP Rechargeable Active Pen Gen

**Help protect our shared future**  
At least 30% post-consumer recycled plastic in the bezel, at least 50% post-consumer recycled plastic in the keycaps

**More screen real estate**  
13.3-inch diagonal FHD display with HP Sure View Reflect

**Stylish and professional convertible**  
adapts with versatile use modes: Laptop, tablet, stand and tent

## Summary

The HP EliteBook 800 SERIES sets the gold standard for corporate notebooks: highly productive, built with security and management in mind.

**For more information, contact your HP Partner Business Manager.**

# Intel P28 Scalable Performance now in the HP Elitebook 1040



## HP Elite 1000 series G10 now with Advanced HP Smart Sense Technology

Co-engineered between HP & Intel, delivers Advanced and Intelligent Power & Performance built on Intel Architecture and AI Technology

Intelligently and autonomously switch between Cool-n-Quiet Operation to High Performance Compute

- Everyday use cases (email & Teams meetings) CPU operates in Cool Quiet mode
- Heavy uses like content creation or multi-tasking across several different applications, CPU operates in performance mode, unleashing more horsepower to get the task done quickly and efficiently

**Effective power management means sustainability advantages and benefits over the lifetime, in a Commercial fleet environment**

Available on HP's latest and most advanced thin and light Elite 1000 series G10 platforms with Intel 28-watt P-Series processors

## Introducing the HP Thunderbolt™ G4 Dock

The Dock That Does It All



120W PIN: 4JOA2AA



280W PIN: 4JOG4AA



### Power Your Productivity

Multitask like a pro on up to four 4K displays with Thunderbolt™.



### Expanded Compatibility. Easy Connectivity.

Connects via USB-C® and works seamlessly with most notebooks and Operating Systems.



### Protect Your Connected Devices

The World's Most Secure Dock equipped with HP Sure Start.



### Enterprise Manageability

Manage your fleet more efficiently with wired Intel® vPro® support.

For more information, contact your HP Partner Business Manager.

# Desktops are essential to hybrid work



### Longtime desktop users

- **Performance** for demanding workloads
- **Dedicated workspace** always set up and ready to go
- **Focus** and stay productive all day

Need fierce power and performance to handle intense workflows and ensure seamless collaboration

### New hybrid users

- **Connect** with enhanced conferencing
- **Personalise** with curated workspaces
- **Confidence** to do your best work without trade-offs

Need flexible, adaptable and expandable desktops to collaborate and multitask

## HP Commercial Desktop Portfolio

### Pro



#### HP 200 G9 Series | All-in One, Tower, Small Form Factor, Desktop Mini

Reliable entry-level desktops for essential computing

#### HP Pro 400 G9 Series | All-in One, Tower, Small Form Factor, Desktop Mini

Configurable desktops and all-in-ones for your growing business

### Elite



#### HP Elite 600 G9 Series | Tower, Small Form Factor, Desktop Mini

Flexible and configurable essential enterprise desktops designed for versatile workspaces

#### HP Elite 800 G9 Series | All-in One, Tower, Small Form Factor, Desktop Mini

Innovative designs and powerful experiences for hybrid work

#### HP 34" All-in-One

Studio quality presentations and collaboration for hybrid pros who create

Available as vPro Enterprise or vPro Essentials

All ELITE available as vPro Enterprise

All above HP G9 series available with a 12<sup>th</sup> generation or 13<sup>th</sup> generation Intel® Core™ processor

For more information, contact your HP Partner Business Manager.

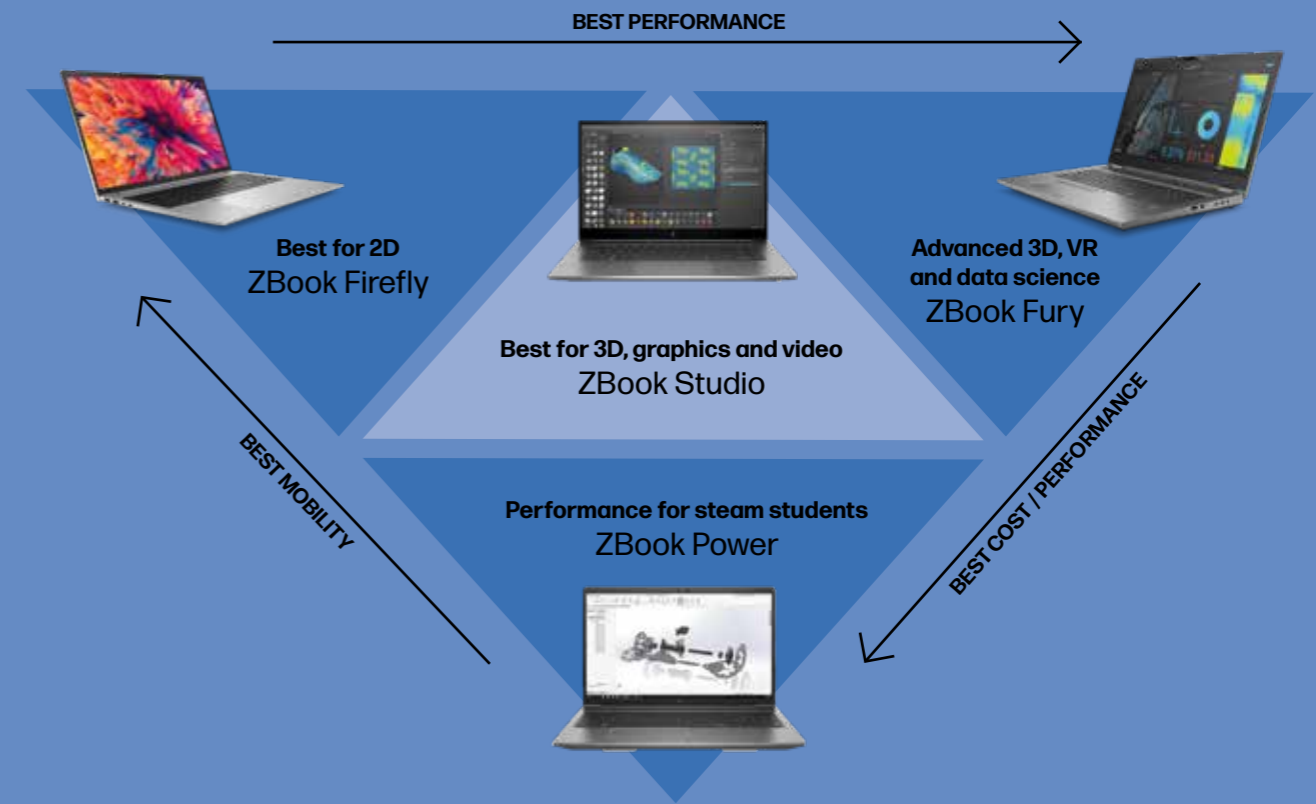
# HP E-Series monitors

Workforce wellbeing at home or in the office



- See More, Do More**  
Accomplish more with 99% sRGB, full breadth of resolutions and expansive screen sizes.
- Enhanced Comfort**  
Height, tilt, swivel, and pivot ergonomic adjustments. HP Eye Ease always-on, true-color low blue light.
- Simplify your set-up and create a clean desk**  
USB-C® connectivity, flexible ports, and USB hub.
- Design that Inspires**  
Recycled material, 100% sustainably sourced packaging.

# HP ZBook linked to mobile workstations



# Turn any space into your office with a Poly headset

<p><b>Voyager 5200 UC</b></p> <ul style="list-style-type: none"> <li>Ideal for mobile professional</li> <li>Comfortable discreet design</li> <li>Includes portable charge case</li> </ul>	<p><b>Voyager Free 60+ UC</b></p> <ul style="list-style-type: none"> <li>True wireless earbuds for work and life</li> <li>Touchscreen charge case</li> <li>ANC helps block out noise for you</li> </ul>	<p><b>Voyager Focus 2 UC</b></p> <ul style="list-style-type: none"> <li>Comfortable all day design</li> <li>ANC helps block out noise for you</li> <li>Acoustic Fence helps blocks noise for the far end</li> </ul>
---	---	---

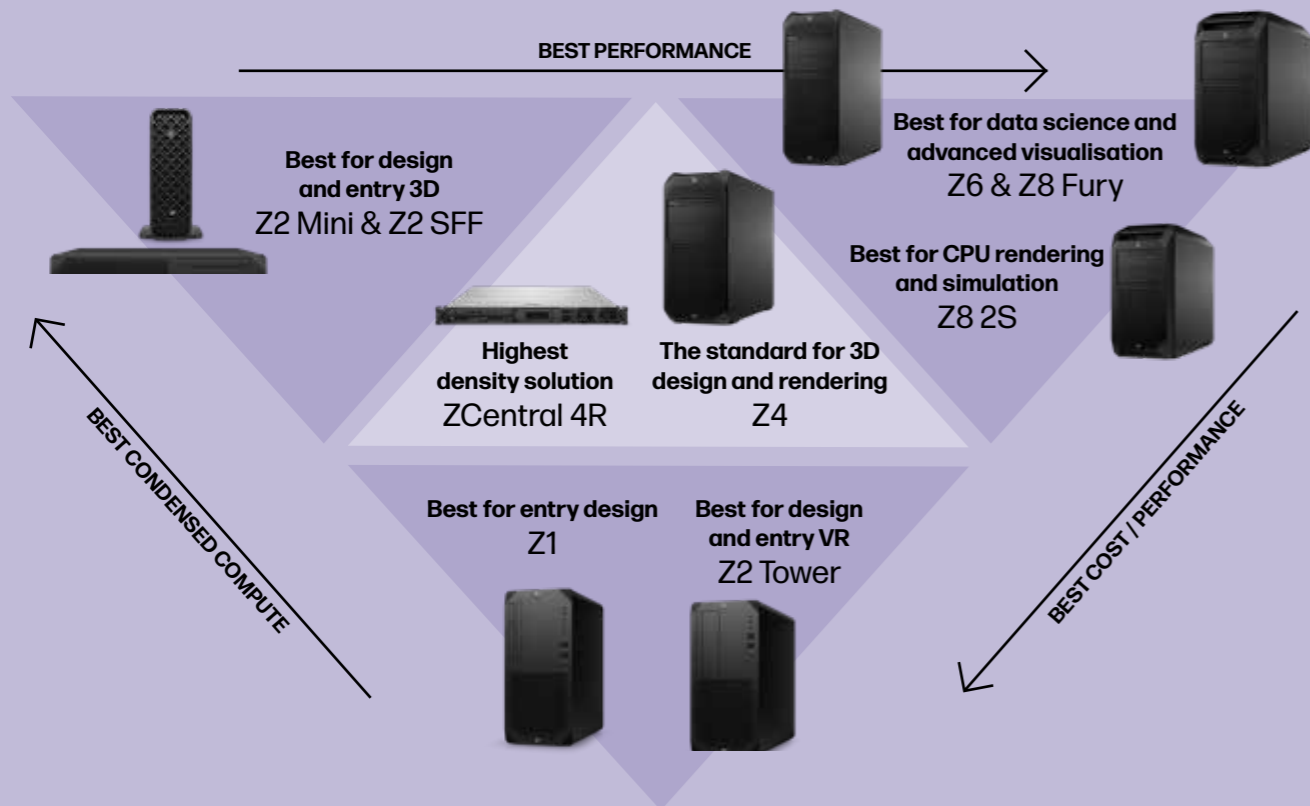
For more information, contact your HP Partner Business Manager.

# 2023 ZBook Portfolio

<p>Firefly 14   Firefly 16</p> <p><b>Best price/mobility leadership</b> <b>Best for 2D and step up from Elite 800</b></p> <ul style="list-style-type: none"> <li>P28 class Intel processors</li> <li>Entry NVIDIA graphics</li> <li>Smallest and lightest in family</li> </ul>	<p>Power 15.6</p> <p><b>Best price/performance leadership</b> <b>Best for on-the-go mainstream 3D performance</b></p> <ul style="list-style-type: none"> <li>H45 class Intel processor</li> <li>Mid-range professional graphics</li> <li>Greater than 2X TDP performance</li> </ul>	<p>Studio 16</p> <p><b>Best performance/size leadership</b></p> <ul style="list-style-type: none"> <li>The gold standard on-the-go</li> <li>Hybrid creativity solution</li> <li>H45 class Intel processors</li> <li>Up to High end RTX graphics</li> <li>19% smaller, lighter design than Power</li> </ul>	<p>Fury 16</p> <p><b>Best performance leadership</b> <b>Best for 3D /Data Science Desktop Class</b></p> <ul style="list-style-type: none"> <li>HX55 class Intel processors</li> <li>Up to High end RTX graphics</li> <li>Max memory, storage expandability</li> </ul>
--	---	--	---



# Z Desktop Portfolio



	Z4 G5	Z6 G5	Z8 G5	Z8 Fury G5
CPU	●●	●●●	●●●●●	●●●●
GPU	●●	●●●●	●●●	●●●●●
Expandability	●●	●●●●	●●●	●●●●●

## Summary

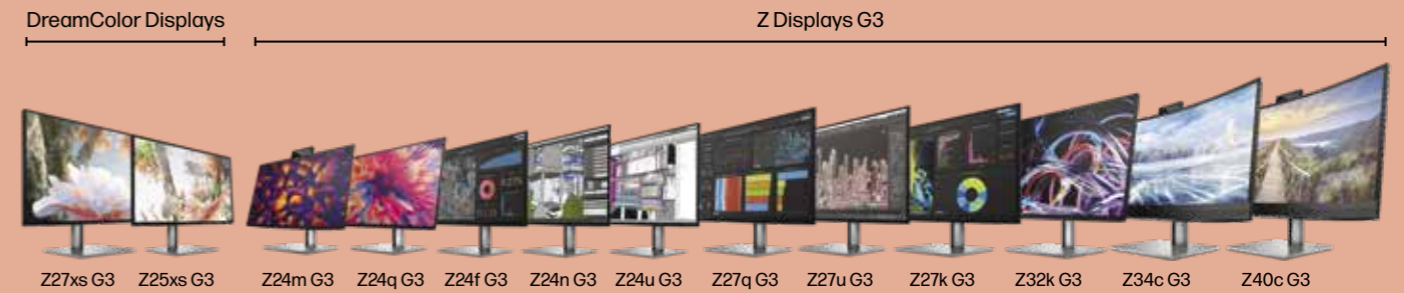
The HP Z workstation portfolio range offers the broadest range of configurable devices to provide the perfect solution for any professional customer workload. This ranges from architecture, engineering, construction and product development to media and entertainment - and from small and medium businesses to enterprises.

For more information, contact your HP Partner Business Manager.

# Z by HP Displays



Exceptional color. Uncompromising design.



**Design**

Meticulously crafted, vivid high-resolution and premium design monitors.

**Color**

Every detail and color perfectly displays right out of the box with HP Factory Color Calibration.

**Conference**

Lifelike conferencing with up to a 4K webcam and high-fidelity speakers, built-in.

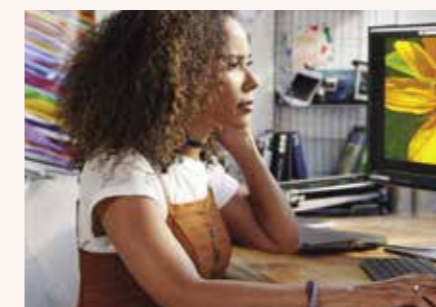
**Performance**

USB-C® and Thunderbolt™ connectivity with the latest technology for uninterrupted workflows.

# Anyware

The single sourced digital workspaces solution that connects graphics-intensive users to the compute power they need - from anywhere - with the security, performance and flexibility needed to meet the demands of a hybrid workforce

## HP Anyware



### End users

Access full workstation power & project files with the freedom to work & collaborate from anywhere, on any device.

## HP Anyware



### Centralized workstations

Centrally store & manage the compute power next to project storage for even greater security and performance.

## HP Anyware



### IT admins

Dynamically match remote power users with the right computer/software for the job.

For more information, contact your HP Partner Business Manager.

# 2023 New experiences and ways to collaborate



Always look at your best and most natural as you move around freely or present to multiple people with an increased 88° field of view. The automated Appearance Filters, Natural Tone and Adjustable Background Blur let you present with confidence.

Offered on EliteBook and ProBook



Using multi-camera lets you enhance storytelling, present clearer demos and offer participants an in-room experience by switching between views of you maintaining eye contact, your actions, or a product/object.

Offered on EliteBook 800, 1000 and Dragonfly



Improve battery usage with Intelligent Hibernate - and enjoy better privacy with Auto Lock and Awake which ensures your device is locked when you leave it and wakes when you return.

Available on EliteBook 1000 & Dragonfly series



HP Smart Sense keeps your PC cool and quiet, with balanced power and performance. Intelligent features can reduce fan noise during conferencing and lessen heat when used on your lap.

Available on select EliteBook and Dragonfly models



Stay connected with Intel Connectivity Performance Suite which maintains the best connection, optimised for your work.

For select Intel Evo platforms

## Summary

The intelligent features in HP premium notebooks let you optimise power management, improve security and drive new employees' experiences in collaboration and overall workflows.

**For more information, contact your HP Partner Business Manager.**

# Better experiences for mobile users with Intel® Evo™



## Get no-compromise mobile performance

- Fast response, plugged or unplugged
- Long-lasting quick-charging real-world battery life
- Instant wake
- Rich displays

## Gather with others

Intelligent collaboration: Superior video conferencing

## Intel vPro® - An Intel® Evo™ design Enjoy the best overall laptop experience



### What users want

- Responsiveness
- Long battery life
- Instant wake
- Stellar form factors



### What IT needs

- Professional grade performance
- Multilayer security features
- Complete remote management
- Reliable stability

## Summary

Intel vPro® gives professional-grade performance, security, manageability and stability. Combined with an Intel® Evo™ design, it powers a better user experience with improved responsiveness, long battery life, instant wake and stellar form factors.

**For more information, contact your HP Partner Business Manager.**

# Together, HP and Intel deliver world-class PC security



## HP Wolf Security + Intel vPro platform including Intel® Hardware Shield

- Detect advanced cyber threats
- Protect from firmware attacks
- Stop malware in its tracks with isolation technology
- Seamlessly maintain an updated security posture
- Expedite recovery after breach
- Secure Windows 11 from below-OS attacks
- Exceed Windows 11 OS security requirements
- Little to no setup



## IN THE OS

### Seamless, secure authentication

Intel® Sensor Solution recognises user's presence + HP Auto Lock and Awake + Windows enable walk-away lock and wake on presence

### Contain malware in a virtual environment

Intel® VT-x technology powers virtualisation + HP Sure Click isolates user activities to contain malware

For more information on advanced security capabilities enabled through HP Wolf Security for Business or Enterprise, please contact your HP Partner Business Manager.

# HP | Intel Excellence Combined



An Evo® Design



# 30+

years of co-engineering and collaboration

# 31+

Intel® architecture-powered HP Commercial designs in 2023

# 284 million+

Intel-powered HP commercial units in circulation (2018–2023)

# Enabling the Future of Work sustainably



From laptops to monitors to headsets and more, HP's personal systems are designed to equip your workforce with the tools to maximize their potential, while aiming to protect our planet

# See what the world's most sustainable PC portfolio can do



Laptops were rated the #1 hardware purchase for companies of all sizes in 2021.5  
When it comes to PCs, put performance and purpose in the hands of your workforce with flexible, managed services and products.



Choose from the most EPEAT GOLD registered products



Improve your energy efficiency



Get more recycled plastic/metal content as well as sustainable packaging



Have peace of mind with reduced chemicals of concern



Benefit from device longevity & repairability rooted as-a-service

## The World's Most Sustainable PC Portfolio

## Your technology choices mean more than you might realise

We aim to be the world's most sustainable and just tech company - taking urgent action to combat climate change, protect human rights, and accelerate digital equity



100% of PCs and displays launched in 2022/23 contain recycled materials

100% of 2022 PS Products achieved EPEAT GOLD U.S. certification

100% of paper packaging comes from recycled or certified sustainable sources

100% of business notebooks shipped in fiber cushions



For more information on product sustainability visit: <https://hp.ecomedes.com>

Including:

- Ecolabels: EPEAT, Energy Star, TCO, Blue Angel, and Nordic Swan
- Recycled content
- Energy consumption



Visit our HP sustainability page <https://www.hp.com/gb-en/hp-information/sustainable-impact.html>

